

Sedona Apartment Community



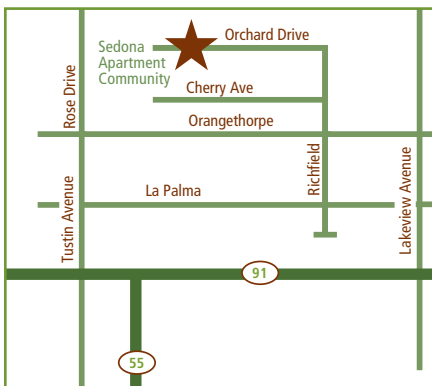
Community Features | Residences Features

Community Features Include:

- Two Resort-Style Pools & Three Spas with Wi-Fi Access
- Health & Fitness Center
- Lit Tennis Courts
- E-Business Center
- Laundry Care Facilities
- Controlled Access Gates
- Pet Friendly

Resident Features Include:

- Dramatic Vaulted Ceilings
- Kitchens with Breakfast Bars, including Stove, Dishwasher & Microwave
- Stackable Washers & Dryers
- Central Heating & Air Conditioning
- Ceiling Fans
- Spacious Walk-In Closets
- Covered Parking with Storage Cabinetry



Driving Directions: From 91 Freeway, exit Tustin Ave. Go north on Tustin Ave. to Orangethorpe, turn right. Turn left at Richfield then left at Orchard Drive. We will be on the right.



Sedona Apartment Community

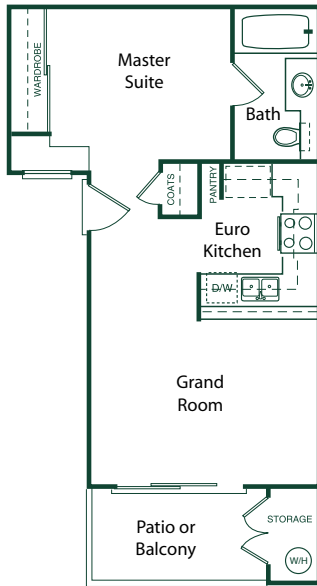
1630 Orchard Dr., Placentia, CA 92870

714.524.8130 Phone | 714.524.8915 Fax

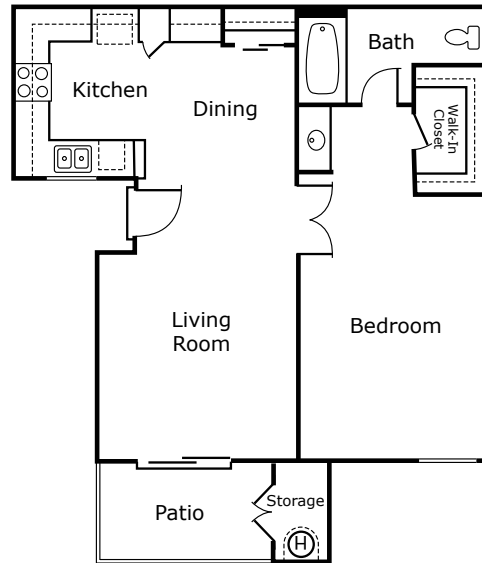
sedona@lyon1.com

LyonSedona.com

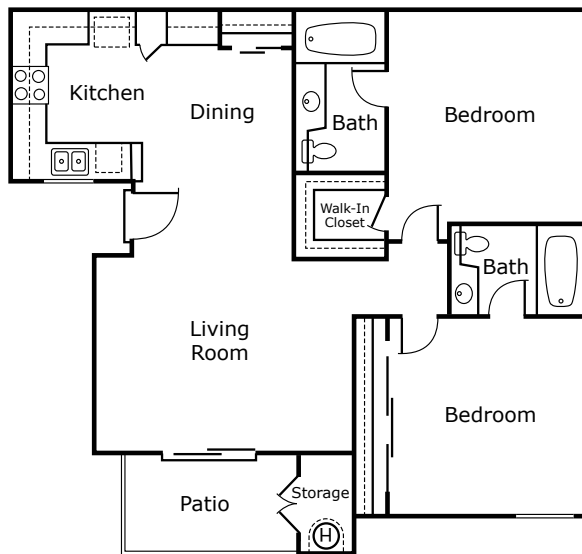
Floor Plans



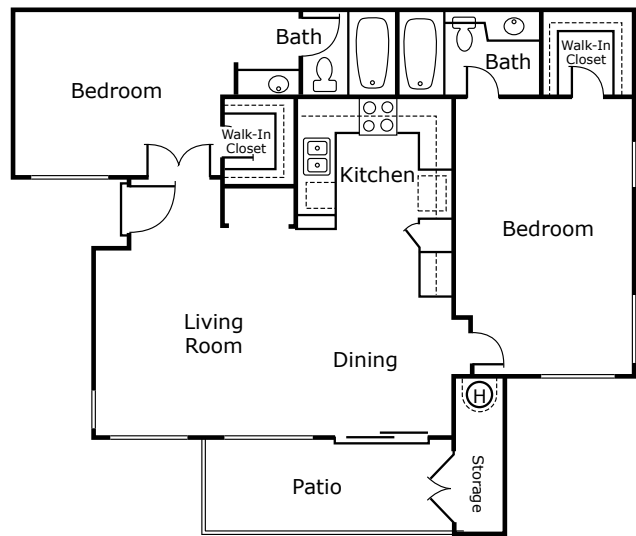
Plan A
 Jr. One Bedroom | One Bath
 Approx. 520 Sq. Ft. _____



Plan B
 One Bedroom | One Bath
 Approx. 704 Sq. Ft. _____



Plan C
 Two Bedroom | Two Bath
 Approx. 949 Sq. Ft. _____



Plan D
 Two Bedroom | Two Bath
 Approx. 962 Sq. Ft. _____

*Amenities and features subject to floor plan. Square footages are approximate and may vary by apartment home.



COMMUNITIES™

Bringing Quality Home™