

Jasmine Village Apartment Community



Community Amenities | Residence Features

Community Amenities

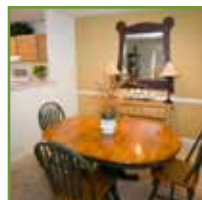
- E-Business Center
- Health and Fitness Center
- Resort-style Pool
- Lit Tennis Courts
- Barbecue and Picnic Area
- Car Care Center
- Children's Play Area
- Laundry Care Center
- Controlled Access Gates
- Convenient access to I-85, Gwinnett Place Mall And the Mall of Georgia
- Pet Friendly

Residence Features

- Spacious One, Two and Three Bedroom Apartment Homes
- Wood-burning Fireplaces
- Ceiling Fans
- Designer Inspired Cabinetry
- Garages
- Full-size Washer and Dryer Connections
- Enclosed Sunrooms
- Expansive Patio (Balcony or Deck)
- Breakfast Bars



Driving Directions: From I-85 north, exit and turn right onto Beaver Ruin Road. Jasmine Village is approximately 1 mile on the right.



Jasmine Village Apartment Community

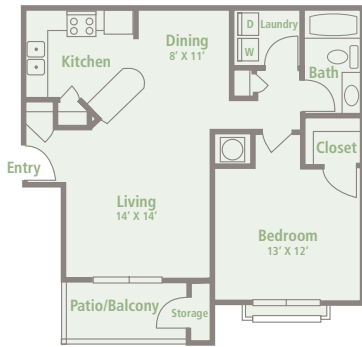
1359 Beaver Ruin Road, Norcross, GA 30093

770.638.3700 Phone | 770.638.0847 Fax

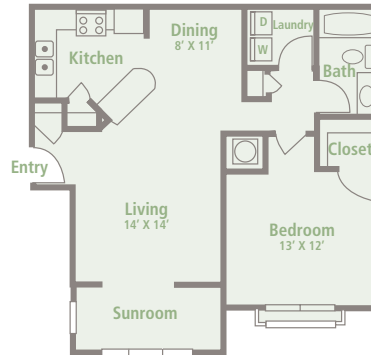
jasminevillage@lyon1.com

LyonJasmineVillage.com

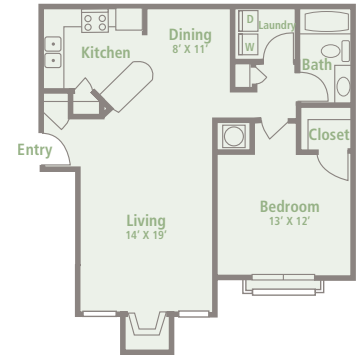
Floorplans



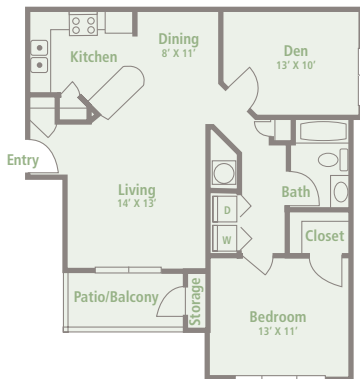
Plan 1
One Bedroom | One Bath with Patio/Balcony
Approx. 783 Sq.Ft. _____



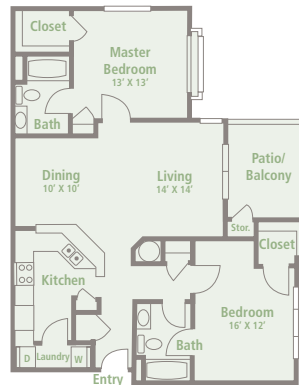
Plan 2
One Bedroom | One Bath with Sunroom
Approx. 864 Sq.Ft. _____



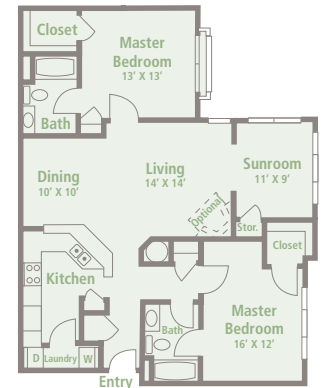
Plan 3
One Bedroom | One Bath
Approx. 880 Sq.Ft. _____



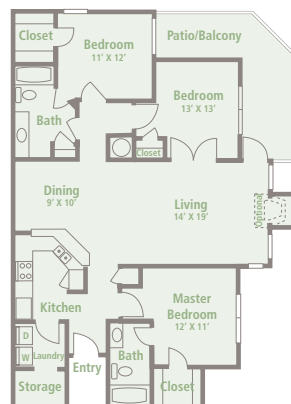
Plan 4
One Bedroom | One Bath with Den & Patio/Balcony
Approx. 909 Sq.Ft. _____



Plan 5
Two Bedrooms | Two Baths
Approx. 1,104 Sq.Ft. _____



Plan 6
Two Bedrooms | Two Baths with Sunroom
Approx. 1,215 Sq.Ft. _____



Plan 7
Three Bedrooms | Two Baths with Patio/Balcony
Approx. 1,449 Sq.Ft. _____

