

# Jasmine at the Galleria Apartment Community



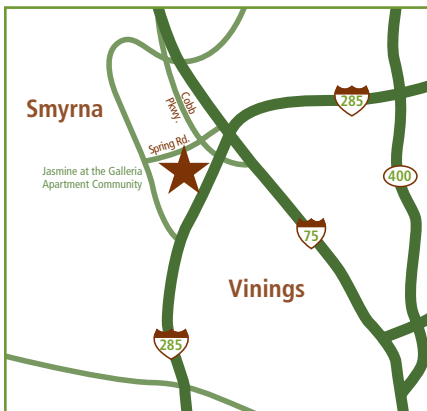
## Community Amenities | Residences Features

### Community Amenities

- Health and Fitness Center
- E-Business Center
- Controlled Access Gates
- Resort-style Pool with Sundeck
- Three Lit Tennis Courts
- Moments from the Silver Comet Trail
- Moments to Historic Vinings and Seconds from I-75 and I-285
- Wooded Views
- Pet Friendly

### Residence Features

- Oversized One, Two & Three Bedroom Apartment Homes
- Huge Exterior Storage
- Designer Inspired Cabinetry
- Spacious Walk-in Closets
- Designer Coordinated Countertops
- Wood-burning Fireplaces
- Gourmet Kitchens with Breakfast Bars
- Black or Stainless Appliances
- Full-size Washer and Dryer Connections
- Designer Selected Two-Toned Paint



**Driving Directions:** From I-285, take Cobb Parkway (Highway 41) exit, travel north one block to Spring Road (1st light) and turn left. Follow Spring Road approximately one-half mile to Jasmine at the Galleria on the left.



### Jasmine at the Galleria Apartment Community

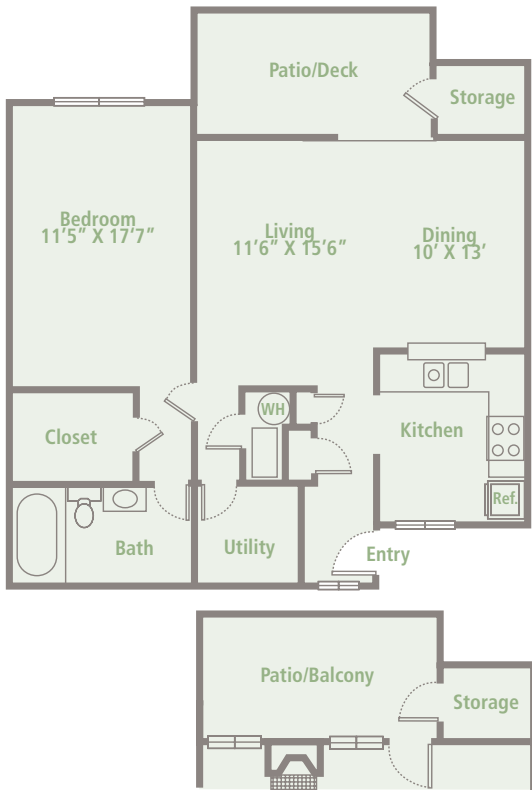
8 Cumberland Way, Smyrna, GA 30080

770.432.1266 Phone | 770.431.0656 Fax

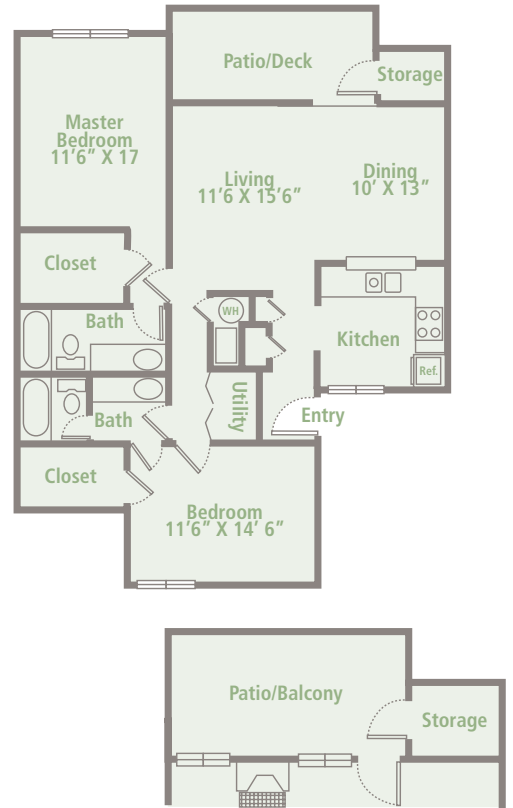
[jasminegalleria@lyon1.com](mailto:jasminegalleria@lyon1.com)

[LyonGalleria.com](http://LyonGalleria.com)

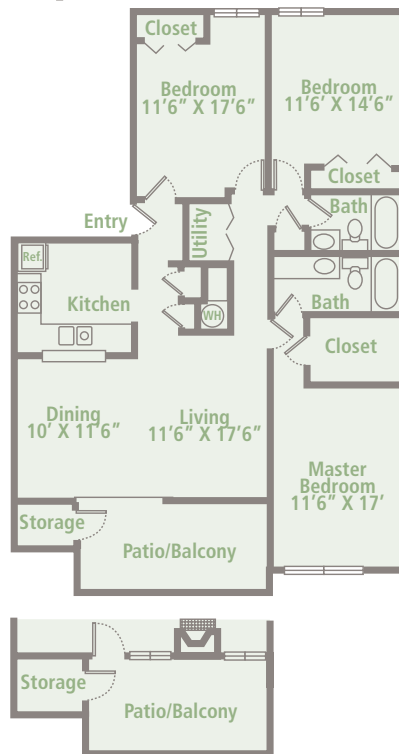
# Floorplans



**Plan 1**  
One Bedroom | One Bath with Patio/Balcony  
Approx. 933 Sq.Ft. \_\_\_\_\_



**Plan 2**  
Two Bedrooms | Two Baths with Patio/Balcony  
Approx. 1,270 Sq.Ft. \_\_\_\_\_



**Plan 3**  
Three Bedrooms | Two Baths with Patio/Balcony  
Approx. 1,479 Sq.Ft. \_\_\_\_\_

\*Amenities and features subject to floor plan. Square footages are approximate and may vary by apartment home.



**COMMUNITIES™**

Bringing Quality Home™