

Jasmine at Holcomb Bridge Apartment Community



Community Amenities | Residence Features

Community Amenities

- Two Pools
- Tennis Courts
- Multi-Sport Court
- Children's Play Area
- Barbecue and Picnic Area
- Health and Fitness Center
- E-Business Center
- Close to Shopping and Restaurants
- Close to Chattahoochee River Recreation Area & GA 400
- Pet Friendly



Residence Features

- Upgraded Interiors Available
- Built-In Bookshelves
- Expansive Patio/Balcony
- Vaulted Ceilings
- Spacious Walk-In Closets
- Pantry and Linen Closets
- In-Home Washer and Dryer Provided
- Ceiling Fans
- Fireplaces
- Unique Greenhouse Sunrooms
- Wooded Views

Jasmine at Holcomb Bridge Apartment Community

8520 Holcomb Bridge Way, Alpharetta, GA 30022

770.587.3488 Phone | 770.992.1050 Fax

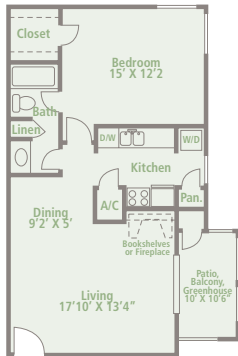
jasmineholcombbridge@lyon1.com

LyonHolcombBridge.com



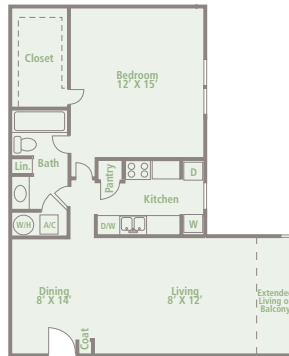
Driving Directions: From GA 400 North, take exit 7A (Holcomb Bridge Road - Norcross) and veer right. Continue approximately 4 miles on Holcomb Bridge Road, go right on South Holcomb Bridge Way, just past Holcomb Center shopping center. Jasmine at Holcomb Bridge is on the right.

Floorplans



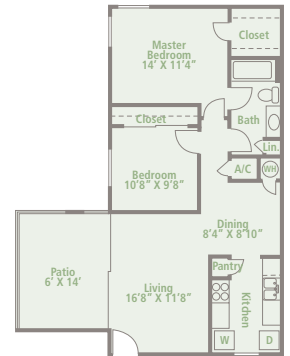
Plan 1 & 2

One Bedroom | One Bath
Approx. 700-706 Sq.Ft.



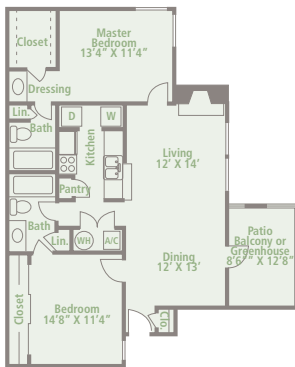
Plan 3

One Bedroom | One Bath
Approx. 853 Sq.Ft.



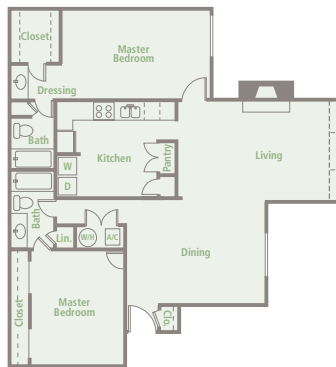
Plan 4

Two Bedrooms | One Bath
Approx. 827 Sq.Ft.



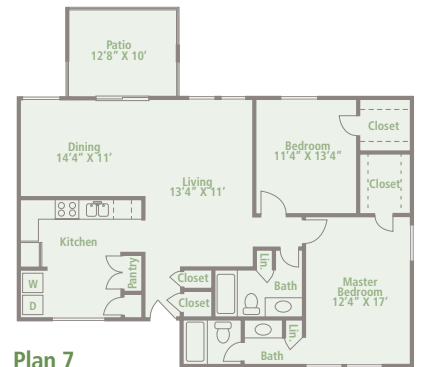
Plan 5

Two Bedrooms | One Bath
Approx. 937 Sq.Ft.



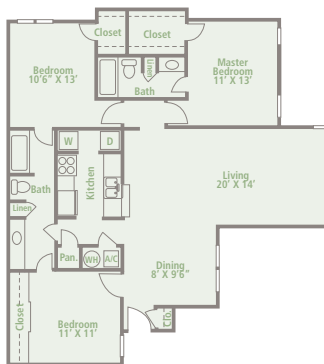
Plan 6

Two Bedrooms | Two Baths
Approx. 1,237 Sq.Ft.



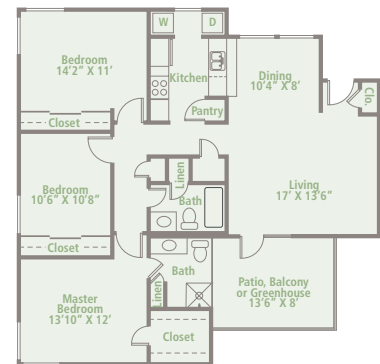
Plan 7

Two Bedrooms | Two Baths
Approx. 1,253 Sq.Ft.



Plan 8

Three Bedrooms | Two Baths
Approx. 1,254 Sq.Ft.



Plan 9

Three Bedrooms | Two Baths
Approx. 1,347 Sq.Ft.

*Amenities and features subject to floor plan. Square footages are approximate and may vary by apartment home.



COMMUNITIES™

Bringing Quality Home™